

## INTERIOR WORK

SC Pentagon SRL  
Tel/fax:0236/412.088  
Depozite:Galati,Constanta,  
Tulcea si Braila  
[www.PentagonRomania.ro](http://www.PentagonRomania.ro);  
[office@pentagonromania.ro](mailto:office@pentagonromania.ro)

FEIN MULTIMASTER

- ▶ FMM 250
- ▶ FMM 250 Q

FEIN. Powered by  
innovation.



## FEIN MULTIMASTER The universal system for interior work and renovation



# All the expertise we have gathered from 40 years in oscillation technology: The new FEIN MULTIMASTER Generation.

The new generation of the multipurpose system for interior outfitting and renovation is here: The new FEIN MULTIMASTER has developed from the unique experience that FEIN has acquired in over 40 years in oscillation Technology. With the oscillating movement and particularly user-friendly accessories, the FEIN MULTIMASTER is an unbeatably versatile, high-precision specialist tool – perfect for all professional outfitting, renovation and repair work. A solution from FEIN, the premier manufacturer of professional and highly reliable power tools.

On the following pages you will find the most important applications for the FEIN MULTIMASTER, arranged by subject, and the accessories we recommend in each case.

## Interior fittings

The FEIN MULTIMASTER works level with the surface. This allows you to cut off protruding nails, screws or pipes completely flush.



## Ceramic tile restoration

Replacing individual damaged tiles creates very little dust and cleaning off old adhesive is easy.



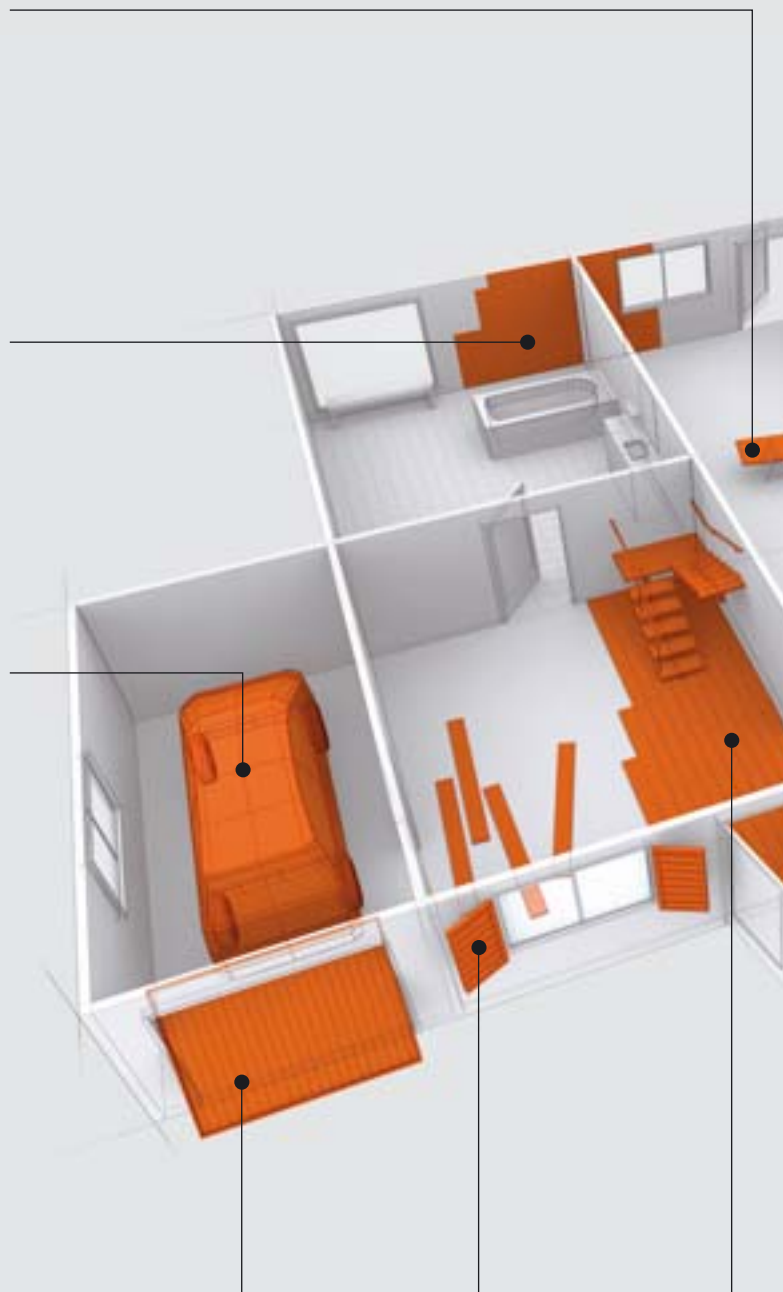
## All kinds of car repairs

From cutting out body sections right through to paint and polishing work – the FEIN MULTIMASTER is a very high-precision tool and requires very little strength to operate.

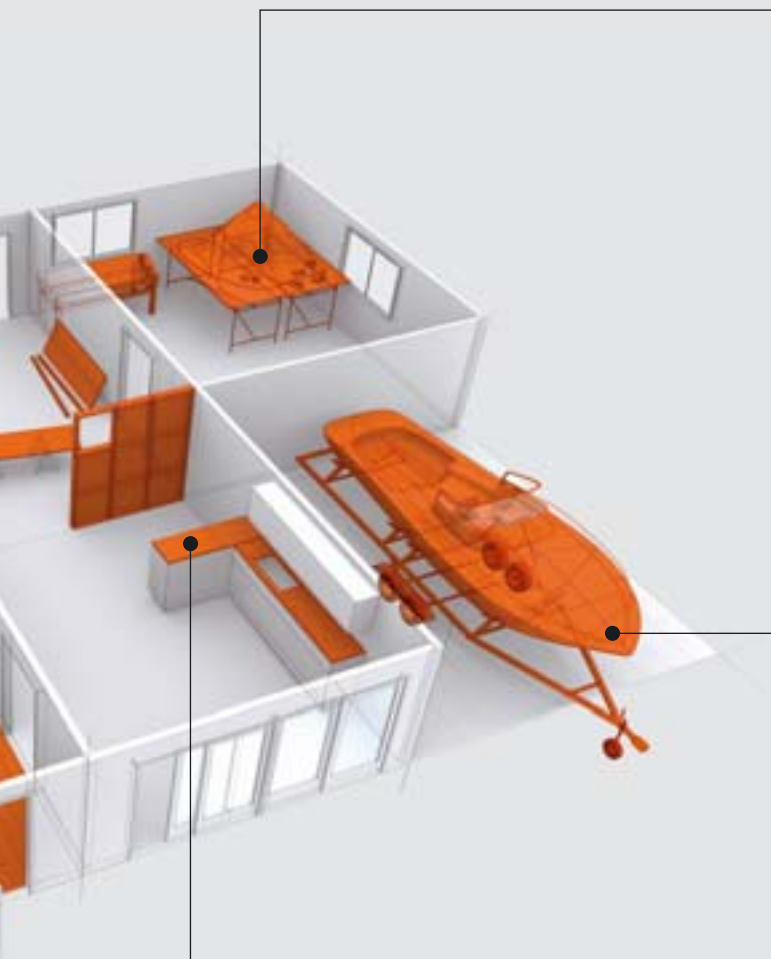


## Renovating windows and doors

Even very weatherbeaten surfaces can be completely renovated and look new again within an astonishingly short time.



PAGE		SAWING	GROUT REMOVAL	RASPING	SHAVING	SANDING	FILING	CUTTING	SHARPENING	POLISHING
6-7	Renovating windows and doors	▲		▲		▲				▲
8-9	Interior fittings	▲		▲	▲	▲		▲		
10	Furniture assembly	▲				▲		▲		
11	Floor covering	▲			▲	▲		▲		
12-13	Ceramic tile restoration	▲	▲	▲	▲	▲				
14-15	Car repairs of all kinds	▲	▲			▲		▲		▲
16	Boat building	▲	▲			▲	▲	▲	▲	
17	Hobby	▲				▲	▲	▲	▲	
18-20	Accessories									
21	FEIN MULTIMASTER sets									



### Hobbies



The wide range of accessories allows a surprising number of applications for hobbies or in the house or garden from sharpening tools to model building.

### Boat building



Thanks to its high-performance cutting and sanding, the FEIN MULTIMASTER works perfectly with every appropriate material, doing away with manual work and improvised solutions.

### Furniture assembly



When restoring furniture, previously time-consuming manual work, such as profile sanding, can be accomplished far more quickly and efficiently.

### Floor covering



The FEIN MULTIMASTER requires very little strength to operate, removing old floor coverings and cutting parquet or laminated flooring, skirting boards and door frames easily.

# Unique expertise, versatile performance: The new FEIN MULTIMASTER generation can do more.

As the inventor of the electric drill, FEIN has been developing innovative and unbeatably efficient solutions for all kinds of uses, both under heavy-duty industrial conditions and in DIY applications. We use this expertise to improve the oscillating FEIN MULTIMASTER system continuously. So that you can meet all the demands made during the working day to perfection, we are constantly adding new and innovative accessories to the range.

**In the lead thanks to oscillation technology:**

- ▶ Unsurpassed versatility in its application thanks to the oscillating action.
- ▶ Perfectly smooth running when sanding and rasping - even into corners and edges.



Up to 21,000 oscillations per minute

### Perfect handling



The FEIN MULTIMASTER's new ergonomic shape makes for particularly comfortable handling. Design and operating elements are perfectly adapted to the working processes and therefore guarantee safe, fatigue-free work with the minimum of effort. The new SoftGrip insert ensures optimal grip.

### Quick-action technology



The new QuickIN rapid change system enables tool-free accessory changes, saving time, offering comfort and facilitating the use of different accessories.

### Technical data

Power input	250 watts
Oscillations	11,000 - 21,000 rpm
Cable	5 m
Sanding pad, corner to corner	80 mm
Tool mounting	QuickIN*

\* Only for FEIN MULTIMASTER SELECT and TOP



## FEIN MULTIMASTER accessories are constantly optimised and extended.

### New Universal E-CUT saw blade



The tried and tested universal E-CUT saw blade is now also available in the wider 44 mm design. The saw blade can also be used with or without depth stop.

Order number  
 6 35 02 152 01 0 saw blade  
 3 26 07 065 01 0 depth stop

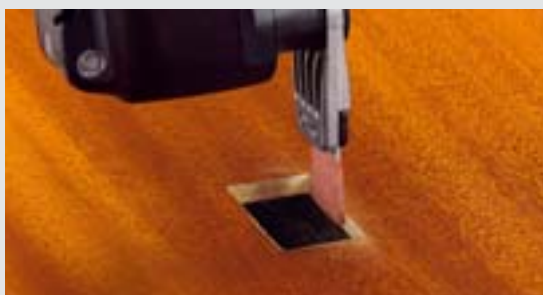
### HSS saw blade for wood



Perfect for cutting out laid parquet, laminate or wall coverings: the round HSS saw blade turns the FEIN MULTIMASTER into an oscillating “mini circular saw”.

Order number  
 6 35 02 154 01 0

### MINICUT and file set



With the new carbide file insert for the MINI CUT and file set, grooves can be filed out cleanly – and wood and plastic completely deburred.

Order number  
 6 39 01 025 06 0

### Table and drill jig support

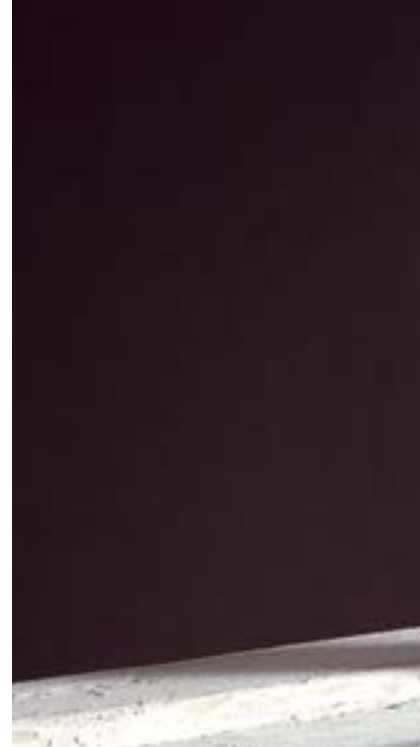


When the FEIN MULTIMASTER is fixed to a table or workbench, the work piece can be approached exactly. Suitable for all commercially available drill jigs.

Order number  
 9 26 02 083 01 0

## A safe bet for windows, and the number one for doors.

Windows, garage doors and outdoor installations can be renovated perfectly with the FEIN MULTIMASTER. Windows are coarse sanded with a grain of 40 or 60. After this, smooth the surface in a second operation with grain 150 or 180, and achieve excellent results in next to no time. You are best using the carbide rasp for heavily weathered surfaces. Using this coarse sand with approximately 5 times the sanding capacity. Even brittle puttied edges can be removed quite simply and without any danger of glass breakage. The result is completely renovated windows in a surprisingly short space of time.



### 1. Sanding frames:



Perfectly sanded surfaces for all conditions of material with the comprehensive range of sanding sheets from 36 to 800 grain.

You will find accessories in the column **sanding** on page 19.

### 2. Sanding spaces and profiles:



The flat sanding pad also gives you access to tight spaces, e.g. the slats of shutters.

Order number  
6 38 06 142 02 9

### 3. Dust-Free Sanding:



A dust-free operation with dust extraction for spotlessly clean results.

You will find accessories in the column **extraction** on page 20.

### 4. Sanding and polishing stone window sills:



Natural or artificial stone window sills can be optimally worked with the special series of sanding materials and the polishing pad.

Order number  
6 38 06 129 06 7



**5. Sanding down signs of weathering:**



With the carbide rasp, remove even stubborn signs of weathering thoroughly and also very quickly thanks to the high sanding capacity.

Order number  
6 37 31 001 01 4

**7. Working right into every corner:**



Renovate very old windows perfectly and work effortlessly right into the corner with the HSS segment saw blade; time-consuming rework is no longer required.

Order number  
6 35 02 106 01 5

**6. Profile sanding:**



The FEIN MULTIMASTER with the profile sanding set is ideal for sanding garage doors, tongue and groove boards on houses and other concave and convex profiles.

Order number  
6 38 06 183 01 3

**8. Removing glass and putty:**



Brittle puttied edges can be removed without any problem and without any danger of glass breakage.

Order number  
6 35 02 106 01 5

**Clean work with the FEIN DUSTEX II**

Sanding, in particular, releases considerable dust that settles as a fine film on surrounding surfaces, in grooves and corners and is time-consuming to remove again. With the FEIN DUSTEX II dust does not even arise and therefore minimises time-consuming cleaning. An integrated switch-on facility enables the dust extractor to be controlled easily via the FEIN MULTIMASTER switch. Further information on the FEIN DUSTEX II set can be found on page 20 and 21.

Order number  
9 20 20



## Capable of everything important to you and your interior.

Indispensable in interior fittings. No matter whether you are renovating your roof, fitting a partitioning wall or want to hide the cable to your stereo behind the wall, the FEIN MULTIMASTER is the perfect tool for all repairs and installation work. The FEIN MULTIMASTER saws exactly into angles and corners, even in tight spaces, and sands with high sanding capacity, thereby ensuring rapid, energy saving work.

### 1. Cutting cable ducts:



The standard E-CUT saw blade is ideal for working plastic components, such as cable ducts, extraction air ducts or rainwater down pipes.

Order number  
6 35 02 133 01 7

Please see the section on **saws** on page 18 for more information about the E-CUT models Standard, Universal and Precision.

### 2. Sawing structural wood:



Saw into wood 60 mm deep with the new universal E-CUT saw blades.

Order number  
6 35 02 151 01 8

### 3. Cutting out structural wood:



The cutting depth for all E-CUT and HSS saw blades for wood can be set with infinite variability with the depth stop.

Order number  
3 26 07 065 01 0

### 4. Trimming and altering plasterboard:



With the E-CUT saw blades plasterboard can be trimmed and cut-outs made so easily for electrical installations etc. in sheets that have already been fitted.

Order number  
6 35 02 133 01 7





**5. Sawing pipes flush to the wall:**



Ideal for dismantling installations that are no longer required. Using the universal E-CUT saw blades the pipes are clipped off for subsequent grouting flush to the wall.

Order number  
6 35 02 151 01 8

**6. Sanding down plaster:**



Use the carbide rasp to sand down cement, concrete, stone, plaster, tile adhesive, paint and wood and save yourself time-consuming and costly manual work.

Order number  
6 37 31 001 01 4

**7. Sawing shadow joints:**



The HSS saw blade for wood turns the FEIN MULTIMASTER into an oscillating “mini circular saw”, – ideal for long, exact cuts, e.g. for expansion sealants in parquet and laminate. Can be used with or without depth stop.

Order number  
6 35 02 154 01 0

# Always accurate – even in tight spaces.

Professional assembly and restoration: with the FEIN MULTIMASTER you have the ideal tool for assembling fitted kitchens and furniture. Even difficult operations in the tightest of spaces, such as sawing recesses in elements that have already been assembled can be carried out accurately and without any difficulty. And when restoring furniture, previously time-consuming manual work, such as profile sanding, can be accomplished far more quickly and efficiently with the FEIN MULTIMASTER.



## 1. Recesses for cable and pipe access:



Make way for cable inlets, sockets and water connections in cupboard and shelf walls using the E-CUT saw blades – without time-consuming dismantling.

Order number  
6 35 02 151 01 8

## 2. Fitting and adapting work sites:



Cutting recesses for subsequent installations and conversions is not a problem with the E-CUT saw blades, even for sheets that have already been fitted.

Order number  
6 35 02 127 01 7

## 3. Restoring and renovating upholstered furniture:



The carbide segment saw blade saves you effort and the upholstery, as staples can be easily removed and do not have to be pulled out with pliers.

Order number  
6 35 02 144 01 4

## 4. Profile sanding:



The replaceable inserts of the profile sanding set enable you to sand in cramped spaces, in grooves and on profiles comfortably and with considerably greater sanding capacity.

Order number  
6 38 06 183 01 3

## 5. Table and drill jig support:



The combined fixing, suitable for all available drill jigs, makes it possible to cut out grooves and recesses precisely. The drill jig mechanism allows exact adjustments.

Order number  
9 26 02 083 01 0

# Restore your floors and gain ground in no time at all.

Perfect for work covering floors: the FEIN MULTIMASTER caters for the entire range of tasks when it comes to floors – from effortlessly removing old floor coverings, such as carpet or PVC to cutting parquet, laminate, floor strips and door jambs to shape, right through to sanding parquet flooring accurately into difficult corners and edges. The FEIN MULTIMASTER saves you a great deal of time and effort in all operations with its accessories that are specially developed for individual applications.



## 1. Cutting floor coverings:



With the convex segment blade you are even able to cut rigid material, such as plastic or carpet simply and without any problems.

Order number  
6 39 03 192 01 4

## 4. Trimming parquet and laminate:



Whether parquet or laminate or composite materials, the universal E-Cut saw blade enables everything to be cut exactly and appropriately for the particular material.

Order number  
6 35 02 151 01 8

## 2. Removing floor coverings / adhesive residues:



Carpet adhesive residues, coatings or other stubborn materials do not stand a chance against the rigid stopping knife.

Order number  
6 39 03 178 01 7

## 5. Sanding down parquet:



Where others cannot even perform, the FEIN MULTIMASTER will impress you with its sanding equipment, high sanding capacity and consistent results.

You will find accessories in the column **sanding** on page 19.

## 3. Altering door jambs exactly:



The E-CUT saw blades with the highest precision and cutting speed will impress you when it comes to altering door jambs for higher floor coverings, as well as for recesses in parquet and laminate.

Order number  
6 35 02 127 01 7

## 6. Sawing out floor strips:



It is possible to saw out fitted floor strips without damaging the wall and floor, thereby avoiding time-consuming touch-up work.

Order number  
6 36 02 151 01 8

## Achieve clean results more quickly in bathrooms.

Quick and economic for bathroom and kitchen renovation. Using the FEIN MULTIMASTER you are able to replace individual, defective tiles purposely, without damaging the surrounding tiling work. With the diamond saw blades or the carbide segment blades, the FEIN MULTIMASTER cuts tile joints with the utmost precision and the minimum of dust. The old tile adhesive can then be conveniently removed with the carbide rasp or stopping knife blade.

### 1. Removing tile joints:



The segment saw blade is used for removing defective tile joints in corners and on edges that enables accurate work without over-cutting. The segment saw blade is available in carbide or diamond quality; the latter will impress you with its noticeably higher service life and is also suitable outdoors for frost resistant sealant materials containing epoxy resin, or for replacing joints.

Order number

6 35 02 118 01 6 Carbide segment saw blade

6 35 02 114 01 7 Diamond segment saw blade  
(in the entire bathroom)

### 2. Sanding supporting surfaces flat:



The carbide rasp is the all-around accessory for tiling. It smooths adhesive glue, sands tiled edges and ensures a flat supporting surface.

Order number  
6 37 31 001 01 4

### 3. Removing elastic sealants:



The flexible stopper knife is perfect for removing elastic materials, such as sealants, adhesive residues or paint, not just in bathrooms.

Order number  
6 39 03 165 01 3

### 4. Completely removing tile joints:



Where tile joints have to be removed and rejoined, the round diamond saw blade is the economic solution, both in terms of work progress and service life.

Order number  
6 35 02 105 01 2



#### Top: equipped for kitchen and bathroom

Do you want to replace defective tiling work in your kitchen or retile your bathroom? When purchased the FEIN MULTI<sup>MASTER</sup> Top set already has the complete range of accessories that you will need for perfect results. For example, the carbide-tipped segment saw blade for cutting through tile joints, the carbide rasp for problem-free removal of tile adhesive or accessories for a dust-free operation. Further information on the FEIN MULTI<sup>MASTER</sup> Top set can be found on page 21.

Order number  
7 229 37 51



## Bring your workshop into the car.

Top class vehicle repairs: with its versatile range of applications – from cutting out body parts right through to paint and polishing work – the FEIN MULTIMASTER is an effective solution for everyone who regularly repairs and customises cars. It works with considerable precision and its high sanding capacity is particularly energy saving. A great benefit in those difficult-to-reach places. Its range of accessories perfectly adapted to the working conditions and materials makes it an ideal tool for automotive applications.

### 1. Cutting out body parts:



Cut sheet steel and plastics up to a max. 1 mm thick with the carbide segment blades, free of burrs and non-warping and a minimum of flying sparks – without complicated touch-up work. Can also be used universally in corners.

Order number  
6 35 02 106 01 5

### 2. Panel and bodywork repairs:



The round HSS segment saw blades are particularly suitable for panel repairs to the accident-damaged vehicles. These can be rotated several times on the drive shaft, which considerably increases the service life.

Order number  
6 35 02 097 02 7

### 3. Removing underseal:



Even underseal and other stubborn coatings can be removed easily with the rigid stopping knife in the best possible time.

Order number  
6 39 03 178 01 7

### 4. Restoring and renovating paint:



Paint defects, flaws and areas that you would otherwise have to sand by hand, are made for the FEIN MULTIMASTER. High sanding capacity and an even sanding pattern are guaranteed.

You will find accessories in the column **sanding** on page 19.



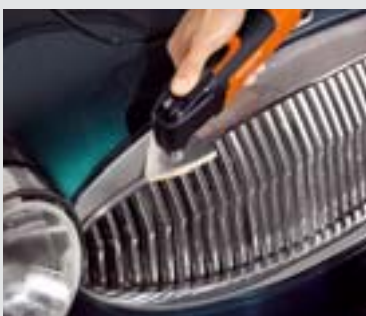
**5. Adding fittings:**



With the MINI CUT and file set even the tiniest of cuts 10 mm and above are not a problem, not even in those difficult-to-reach places. Available for plastics, metals and wood.

Order number  
6 39 01 025 06 0 Set

**6. Polishing to a bright shine:**



The felt polishing pad set brings a bright shine back to paintwork and chrome, but also works brilliantly on wood and stone.

Order number  
6 38 06 140 02 7 Set

**7. Finishing aluminium rims:**



The particularly soft sanding materials from FEIN enable you to work gently but thoroughly. They enable you to work aluminium rims effectively, but also carry out sensitive paintwork.

You will find accessories in the column **sanding** on page 19.

**8. Sanding in tight spaces:**



The sanding finger is very effective for working tight or hidden spots.

You will find accessories in the column **sanding** on page 19/20.

## Definitely one to take on board.

Indispensable for applications on the sea: with the FEIN MULTIMASTER you achieve noticeably greater efficiency for boat building and restoration. Thanks to its high cutting performance the FEIN MULTIMASTER works perfectly with wood, fibreglass, carbon fibre-reinforced plastic and virtually all other relevant materials, doing away with manual work and improvised solutions. Installations in tight spaces are no more of a problem than renovating teak decks.



### 1. Sanding:



Ideal for restoring and caring for boats: the FEIN MULTIMASTER sands effortlessly exactly in every corner and on edges.

You will find accessories in the column **sanding** on page 19.

### 2. Finishing and renovating the deck:



Remove deck sealing materials quickly and thoroughly with the cutting blades. The time saving is 80% and more when renovating teak decks.

You will find accessories in the column **cutting** on page 20.

### 3. Adding fittings:



The MINICUT saw blades are exactly the right size for working in tight spaces, in difficult-to-reach spots or for sawing small recesses (above 10 mm).

Order number  
6 39 01 025 06 0 Set

### 4. Filing recesses:



Recesses can be filed exactly to shape with the MINICUT and file set.

Order reference  
6 39 01 025 06 0 Set

### 5. Repairing the hull / floor areas:



The round carbide-tipped segment saw blades cater excellently for sawing work on fibreglass and carbon fibre-reinforced plastic hulls. You will be happy with the perfectly clean cuts (0.5 mm wide) without any cracking or damage to the laminate.

Order number  
6 35 02 097 02 7



## The finishing touch to your home.

For hobbies, home and the garden: When sharpening tools, working stone or stone products, laying foundations or model building down to the finest detail, the FEIN MULTIMASTER is efficient, precise and always good for a surprise. Its comprehensive system of accessories open up undreamed of possibilities. And of course it will impress you with everything that it does, with high cutting and sanding performance, flexible handling and great sensitivity.



### 1. Cutting out when model building:



Minimum cuts in the minimum of space – for this you have the MINI CUT and file set.

Order number  
6 39 01 025 06 0 Set

### 2. Filing when model building:



Recesses can be filed out exactly with the MINI CUT and file set.

Order number  
6 39 01 025 06 0 Set

### 3. Table and drill jig support:



You are able to fix your FEIN MULTIMASTER with the new table and drill jig support, to work work pieces accurately.

Order number  
9 26 02 083 01 0

### 4. Sharpening blades / cutters:



The MINI CUT and file set enables you to sharpen tools and gardening equipment, in most cases, without having to remove the blades.

Order number  
6 39 01 025 06 0 Set

**The E-CUT  
Economy pack.**  
Buy 3, pay for 2

# Nothing is impossible: the FEIN MULTIMASTER accessories at a glance.

The FEIN MULTIMASTER will impress you with its optimal working results in the most varied of application areas: from interior fittings and renovation, to boat building right through to vehicle repairs. So that you can also really undertake any work with the FEIN MULTIMASTER with perfect results, FEIN offers you a comprehensive range of accessories that have been developed especially for the various applications and materials.

## ► Sawing

### Carbide, segment saw blade, circular

For plastics, fibreglass, wood, putty, non-ferrous metals and sheet steel up to approx. 1 mm.

Ø	No. in pack	Order number
63 mm	1	6 35 02 096 02 3
63 mm	2	6 35 02 096 01 7
80 mm	1	6 35 02 097 02 7
80 mm	2	6 35 02 097 01 1



### HSS segment saw blade

For plastics, fibreglass, wood, putty, non-ferrous metals and sheet steel up to approx. 1 mm. Ideal for working in corners.

Ø	Order number
80 mm	6 35 02 106 01 5



### HSS saw blade, circular, cropped

For plastics, fibreglass, wood, putty, non-ferrous metals and sheet steel up to approx. 1 mm, level with the surface.

Ø	Order number
90 mm	6 35 02 144 01 4



### Cutting paste

Lubricant for cutting sheet metal.

Order number
3 21 32 020 12 9

### Segment saw blade, angled

Only for soft materials. Ideal for working corners, flat to the surface.

Ø	Order number
84 mm	6 35 02 113 01 9



### Standard E-CUT-saw blade, narrow (35 mm)

Saws wood up to 50 mm, drywall and soft plastics. Makes it very easy to enter the material at any point.

Width	No. in pack	Order number
35 mm	1	6 35 02 133 01 7
35 mm	3	6 35 02 133 03 0



### Standard E-CUT-saw blade, wide (65 mm)

Saws wood up to 50 mm, drywall and soft plastics. Makes it very easy to enter the material at any point.

Width	No. in pack	Order number
65 mm	1	6 35 02 134 01 5
65 mm	3	6 35 02 134 02 5



### Precision E-CUT-saw blade, narrow (35 mm)

Highest cutting speed and precision thanks to double-row JAPAN tooting. For wood up to 50 mm, drywall and soft plastics.

Width	No. in pack	Order number
35 mm	1	6 35 02 126 01 3
35 mm	3	6 35 02 126 03 0



### Precision E-CUT-saw blade, wide (65 mm)

Highest cutting speed and precision thanks to double-row JAPAN tooting. For wood up to 50 mm, drywall and soft plastics.

Width	No. in pack	Order number
65 mm	1	6 35 02 127 01 7
65 mm	3	6 35 02 127 02 0



### Universal E-CUT-saw blade, narrow (29 mm)

Wide range of applications thanks to bi-metal tooting. Saws wood up to 50 mm, plastics, sheet metal up to 2 mm, copper or aluminium pipes and profiles.

Width	No. in pack	Order number
29 mm	1	6 35 02 151 01 8
29 mm	3	6 35 02 151 02 0



### Universal E-CUT-saw blade wide (44mm)

Wide range of applications thanks to bi-metal tooting. Saws wood up to 50 mm, plastics, sheet metal up to 2 mm, copper or aluminium pipe and profiles.

Width	No. in pack	Order number
44 mm	1	6 35 02 152 01 0
44 mm	3	6 35 02 152 02 0



### HSS saw blade for wood

Circular HSS-saw blade for wood – the “mini” circular saw is ideal for long straight cuts and for cutting out laid parquet, laminate and wood panelling.

Ø	No. in pack	Order number
100 mm	1	6 35 02 154 01 0

**Set with depth stop** 3 26 07 065 02 0



### MINICUT and file set

For cut-outs 10 mm and above. 2 saw blades for wood and soft plastics, 2 carbide segment saw blades for hard plastics, fibreglass and sheet steel up to 1 mm, diamond file set.

Order number
6 39 01 025 06 0



### MINICUT saw blade

For wood and other soft materials, plunge depth 30 mm, pack of 2.

Width	Order number
10 mm	6 35 02 132 01 3
20 mm	6 35 02 131 01 0



### MINICUT HSS saw blade

For non-ferrous metals and plastic, plunge depth 20 mm, pack of 2.

Width	Order number
10 mm	2 6 35 02 130 01 1
20 mm	2 6 35 02 129 01 9



### Diamond file

For sharpening blades and cutters.

Grain	Width	Order number
Extra fine	10 mm	6 37 06 014 02 6
Fine	20 mm	6 37 06 013 02 8
Normal	20 mm	6 37 06 012 02 4



## ► Sawing

### Carbide file set

For filing out recesses and for deburring work. Suitable for the MINICUT and file set.



**Order number**  
6 37 06 015 01 0

### Depth stop

Suitable for all E-CUT saw blades and for the carbide-tipped segment saw blade for wood. Only suitable for the new FEIN MULTIMASTER FMM 250/250Q.



**Order number**  
3 26 07 065 01 0

## ► Rasping

### Carbide rasp (triangular)

For coarse sanding filler, tile adhesive, concrete, stone and wood. Suitable for use without or without dust extraction.



**Order number**  
6 37 31 001 01 4

### Carbide rasp (finger shape)

For coarse sanding filler, tile adhesive, concrete, stone and wood. Both sides of the coated finger shape are particularly good for artistic work.



**Order number**  
6 37 31 002 01 7

## ► Removing grout

### Carbide-tipped segment saw blade

For cutting out defective tile joints and for milling cracks in plaster, porous concrete and similar building materials.



Ø  
63 mm

**Order number**  
6 35 02 118 01 6

### Diamond saw blade

For cutting through marble and concrete trass joints. Low dust generation, very high service life.



Ø  
63 mm

**Order number**  
6 35 02 105 01 2

### Diamond segment saw blade

For cutting out defective tile joints and for milling cracks in plaster, porous concrete and similar building materials. Long service life.



**Order number**  
6 35 02 114 01 7

### Cleaning block

Rhomb for cleaning of carbide and diamond tools.



**Order number**  
6 37 19 007 01 0

## ► Scraping

### Rigid stopping knife

For removing stubborn old paint, adhesive residues, carpeting, tile adhesive and underbody sealants.



**Order number**  
6 39 03 178 01 7

### Flexible stopping knife

For removing silicon or acrylic fillers in bathrooms and labels.



**Order number**  
6 39 03 165 01 3

## ► Sanding

### Sanding pad set, unperforated

For sanding without dust extraction, pack of 2.



**Order number**  
6 38 06 129 02 6

### Set of sanding pads for plastics

With plastic backing plate to avoid marks, pack of 2.



**Order number**  
6 38 06 153 02 2

## ► Sanding

### Sanding pad set, flat

For very narrow openings (e.g. slats on cupboards, shop windows, etc.), pack of 2.



**Order number**  
6 38 06 142 02 9

### Sanding sheet set

For universal application on practically all surfaces. Corundum sanding grains and bonded artificial resins guarantee high sanding capacity. 10 sheets per set, unperforated, with Velcro rapid attachment, grain 60, 80, 120, 180, 240.



**Order number**  
6 37 17 082 03 3

### Sanding sheets

Unperforated, with Velcro attachment. For universal application on practically all surfaces.



Grain	Pack of 5 Order no.	Pack of 50 Order no.
36	... 086 04 8	... 086 01 0
40	... 081 04 6	... 081 01 8
60	... 082 04 9	... 082 01 1

Grain	Pack of 5 Order no.	Pack of 50 Order no.
80	6 37 17 ...	6 37 17 ...
100	... 083 04 3	... 083 01 5
120	... 084 04 1	... 084 01 3
150	... 085 04 5	... 085 01 7
180	... 087 04 2	... 087 01 4
220	... 088 04 0	... 088 01 2
240	... 089 04 4	... 089 01 6
280	... 090 04 6	... 090 01 8
	... 091 04 5	... 091 01 7

### Supersoft sanding pad

For special applications, such as aluminium rims and paint repairs. Use only with "Supersoft" sanding sheets. Pack of 2.



**Order number**  
6 38 06 141 02 6

### Supersoft sanding sheets

For special applications.



Grain No.	No. in pack	Order number
240	50	6 37 17 126 01 5
320	50	6 37 17 127 01 9
400	50	6 37 17 128 01 7
500	50	6 37 17 179 01 6

### Profile sanding set

Consisting of 1 holder and 6 different professional attachments: 1 V-form for 90°-angle, 1 x trapezoidal for tongue and groove joints, 1 for straight edges 1 x convex form (large), 1 x concave and 1 convex form (small) and 5 sheets of sand paper. In each grain size 80, 120 and 180.



**Order number**  
6 38 06 183 01 3

### Sand paper for the profile sanding set

For practically all materials, e.g. wood, metal, paint and plastics, 25 to a pack.



Grain	Order number
80	6 37 17 217 01 6
120	6 37 17 218 01 4
180	6 37 17 219 01 8

### Sanding set, stone

Universally suitable for sanding stone and stone products. Consisting of 5 of each type of sanding sheet, grain 40, 80, 120, 220, 320, 400, 600, 800; 1 of each type of sanding pad with aluminium and plastic backing plate; 1 felt polishing pad.

**Order number**  
6 38 06 129 06 7

### Sanding sheets, stone

Especially for sanding natural and artificial stone. In 8 grades for coarse to fine sanding.



Grain	No. in pack	Order number
40	50	6 37 17 120 01 4
80	50	6 37 17 121 01 3
120	50	6 37 17 122 01 6
220	50	6 37 17 123 01 0
320	50	6 37 17 124 01 8
400	50	6 37 17 125 01 2
600	50	6 37 17 175 01 7
800	50	6 37 17 176 01 0

### Sanding finger

For use in extremely tight and hidden spots, in channels, grooves, openings and folds. Also for mould-making, in concave and convex forms, 2 to a pack.



Height	Order number
7 mm	6 38 06 159 02 3
1 mm	6 38 06 157 02 1

## ► Sanding

### Sanding finger

Additionally with Velcro attachment on top and underside. Pack of 2.



**Height**  
2 mm

**Order number**  
6 38 06 158 02 9

### Sanding sheets for sanding fingers

With Velcro rapid attachment, fully bonded with artificial resin, high sanding capacity, corundum. Application: wood, metal, soldered joints, fibreglass-reinforced plastic, plastic, paint, filler, leather, pack of 20.



Grain	Order number
40	6 37 17 184 01 2
60	6 37 17 185 01 6

Grain	Bestellnummer
80	6 37 17 186 01 9
100	6 37 17 187 01 3
120	6 37 17 188 01 1
150	6 37 17 189 01 5
180	6 37 17 190 01 7
220	6 37 17 191 01 6
240	6 37 17 192 01 9
280	6 37 17 193 01 3
320	6 37 17 194 01 1
400	6 37 17 195 01 5

### Set of sanding pads, perforated

For sanding with dust extraction, pack of 2.



**Order number**   **No. in pack**  
6 38 06 136 02 9   2

### Sanding sheets, perforated

For sanding with dust extraction. For universal application on practically all surfaces. Corundum sanding grains, fully bonded with artificial resins guarantee high sanding capacity. From grain 36 to 280.



Grain	Pack of 5 Order no.	Pack of 50 Order no.
36	... 6 37 17 ...	... 6 37 17 ...
40	... 107 04 9	... 107 01 1
60	... 108 04 7	... 108 01 9
80	... 109 04 1	... 109 01 3
100	... 110 04 3	... 110 01 5
120	... 111 04 2	... 111 01 4
150	... 112 04 5	... 112 01 7
180	... 113 04 9	... 113 01 1
	... 114 04 7	... 114 01 9

Grain	Pack of 5 Order no.	Pack of 50 Order no.
220	6 37 17 ...	6 37 17 ...
240	... 115 04 1	... 115 01 3
280	... 116 04 4	... 116 01 6
	... 117 04 8	... 117 01 0

### Sanding sheet set

10 of each type of sanding sheet, perforated for dust extraction, with Velcro rapid attachment, corundum, grain 60, 80, 120, 180, and 240.



**Order number**  
6 37 17 109 03 5

## ► Sanding

### Adapter hose

For connecting the dust extractor to the most common domestic vacuum cleaners. Suction hose attachment Ø 27 mm.

**Model**   **Order number**  
Thin   3 06 05 110 00 8  
Thick   3 06 05 109 00 6

## ► Polishing

### Set of felt polishing pads

For polishing metal parts, as well as for polishing and decorative polishing of stone and stone products. Gelcoat layers on boats can also be polished. Pack of 2.



**Order number**  
6 38 06 140 02 7

## ► Cutting

### Segment blade, concave

For cutting soft materials such as felt, leather and polystyrene.



**Order number**  
6 39 03 193 01 8

### Segment blade, convex

For cutting rigid materials such as plastic, linoleum, rubber, cardboard, leather, woven wire cloth, looped fabric/carpet floor coverings, and much more.



**Order number**  
6 39 03 192 01 4

## ► Cutting

### Cutter blade

For cutting out panelled deck sealant materials rapidly and safely. Also for problem areas such as cabins, rails, gunwales, cleats and curves.



**Blade width**   **Order number**  
3 mm   6 39 03 200 01 7  
4 mm   6 39 03 201 01 6  
5 mm   6 39 03 202 01 9

## ► General accessories

### Table and drill jig support

Perfect for precision cut-outs: the FEIN MULTIMASTER can be clamped to a table or workbench and the work piece can be approached securely. It is also possible to clamp in commercially available drill jigs with a 44 mm collar diameter – the FEIN MULTIMASTER can be delivered via the mechanism accurate to the nearest millimetre. Only suitable for the FEIN MULTIMASTER FMM 250/250Q.



**Order number**  
9 26 02 083 01 0

## ► Dust extraction

### Filter paper for FEIN DUSTEX II

Pack of 5

**Order number**  
3 13 22 781 01 7

## ► Extraction

### FEIN DUSTEX II

The addition for dust-free work. With a socket on the device, automatic on/off, 5 guide rolls for unlimited freedom of movement, extensive basic equipment and the option of being used in wet or dry conditions.

**Order number**  
9 20 20

### Included in the set:

1 suction hose, 5 m, Ø 36 mm;  
1 floor nozzle; 2 extension pipes;  
1 flat nozzle;  
1 upholstery nozzle;  
1 adapter for FEIN power tools;  
1 universal power tool adapter;  
1 filter bag



### Technical data:

Power consumption	1,300 W
Air flow rate	3,300 l/min
Max. vacuum	230 mbar
Container volume	24 l
Max. rating	2,000 W
Weight	7 kg
Cable with plug	6 m

### Dust extractor

2 sanding pads, perforated; 5 of each type of sanding sheet perforated, grain 60, 80 and 120; 1 extractor hood with suction tube; 2 hose nozzles for hose connection Ø 27 and 32 mm plus 2 adapters for connection to the most common domestic vacuum cleaners. For the FEIN MULTIMASTER FMM 250/250Q.

**Order number**  
9 26 02 081 01 0

## ► General accessories

### Carrying case, filled

The plastic case with Top equipment for your Select pack. 1 sanding pad, perforated for dust extraction; 5 of each perforated sanding sheets, grain 60, 80, and 120; 180. 1 dust extractor, 2 hose nozzles hose connection Ø 27/32 mm and 2 adaptors for common domestic vacuum cleaners, profile sanding set, 1 carbide rasp.

**Order number**  
3 39 01 118 04 0



### Carrying case, unfilled

Plastic carrying case with practical inner spacing, without machine and accessories. Optimally suited for storing FEIN MULTIMASTER START and FEIN MULTIMASTER SELECT.

**Order number**  
3 39 01 118 03 0



## Just the right one for everyone: the FEIN MULTIMASTER sets

### 1. FEIN MULTIMASTER START



For beginners, who do not want to sacrifice professionalism in spite of being price conscious.

- ▶ 1 FEIN MULTIMASTER FMM 250
- ▶ 1 sanding pad
- ▶ 5 of each type of sanding sheet, grain 80, 120 and 180, unperforated
- ▶ 1 universal E-CUT saw blade
- ▶ 1 rigid stopping knife
- ▶ 1 key and mounting bolts

Order number

7 229 36

### 3. FEIN MULTIMASTER TOP



The all-round carefree package with which all applications can be carried out professionally in interior fittings, renovation and hobbies – from floor work to renovating windows.

- ▶ 1 FEIN MULTIMASTER FMM 250 Q quick action system in a sturdy plastic case

Complete range of accessories of the START equipment and

- ▶ 1 sanding pad, perforated
- ▶ 5 of each type of sanding sheet, grain 80, 120 and 180, perforated
- ▶ 1 dust extraction device
- ▶ 1 carbide rasp, perforated
- ▶ 1 Profile sanding set

Order number

7 229 37 51

### 2. FEIN MULTIMASTER SELECT



For everyone, who expects professional tools and results and wants to use the complete application range for interior fittings and renovation.

- ▶ 1 FEIN MULTIMASTER FMM 250 Q with QuickIN quick-action system

Complete accessories of the Start equipment and

- ▶ 1 Carbide-tipped segment saw blade
- ▶ 1 HSS saw blade

Order number

7 229 37 50

### 4. FEIN MULTIMASTER TOP EXTRA



How can we make the TOP-Model even better? By also supplying the clean work site at the same time with FEIN DUSTEX II.

- ▶ 1 FEIN MULTIMASTER FMM 250 Q quick action system in a sturdy plastic case

Complete range of accessories of the TOP equipment and

- ▶ FEIN DUSTEX II set for dust-free work

#### FEIN DUSTEX II

Included in the set: 1 suction hose 5 m, Ø 36 mm; 1 floor nozzle; 2 extension pipes; 1 flat nozzle; 1 upholstery nozzle; 1 adapter for FEIN power tools, 1 universal power tool adapter; 1 filter bag

Order number

7 229 37 52

**FEIN. Powered by  
innovation.**



**Do you have any further questions?  
Or would you like to test the new FEIN MULTIMASTER?**

**Your specialist supplier is happy to help.**

**Germany:** C. & E. FEIN GmbH, Leuschnerstr. 43, 70176 Stuttgart,  
Telefon 07 11 66 65-0, Fax -229

**Great Britain:** FEIN Industrial Power Tools U.K. Ltd., 4 Badby Park, Heartlands  
Business Park, Daventry, Northants NN11 5YT, Tel. 01327 308730

**USA:** FEIN Power Tools Inc., 1030 Alcon Street, Pittsburgh, PA 15220,  
Tel. 412.922.8886, Toll Free: 1.800.441.9878

**Canada:** FEIN Canadian Power Tool Company, 323 Traders Boulevard East  
Mississauga, Ontario L4Z 2E5, Tel. (905) 890-1390, Toll Free: 1-800-265-2581  
FEIN Canadian Power Tool Company, 2810 De Miniac St. Laurent,  
Quebec H4S 1K9, Tel. (514) 331-7390, Toll Free: 1-800-789-8181

**Australia:** FEIN Australasia Pty. Ltd., P.O. Box 287, Unit 2/ 110 Bonds Road,  
Riverwood N.S.W. 2210, Tel. 02 9534 3533

**South Africa:** FEIN Power Tools South Africa (Pty) Ltd.,  
P.O. Box 1411 Bramley 2018, 1st Floor Delpark House, 77 Fifth Street, Wynberg,  
Johannesburg, Tel. 011 4442228

[www.fein.com](http://www.fein.com)