

150 Mounted flap wheels



SC Pentagon SRL


Tel/fax: 0236/412.088

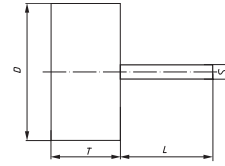
Depozite: Galati, Constanta, Tulcea si Braila

www.PentagonRomania.ro; office@pentagonromania.ro



Page

148	Qualities and Applications
151	Mounted flap wheels of abrasive cloth
153	Mounted flap wheels of abrasive cloth, slotted
153	Mounted flap wheels of abrasive cloth, recessed
154	Mounted flap wheels of abrasive cloth, SFE
154	Mounted flap wheels of abrasive cloth, SFC
155	Mounted flap wheels with internal thread
156	Mounted flap wheels with threaded shank
157	Mounted flap wheels abrasive fleece lamellar inserts
158	Mounted flap wheels abrasive fleece disc inserts
159	Mounted flap wheels of abrasive fleece/abrasive cloth combination
225	



SFL, Flap wheels

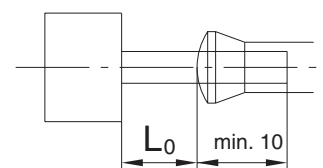
Description	D mm	T mm	S mm	L mm	n recommended (1/min)	n max. (1/min)	available grits NK						
							40	60	80	120	150	240	320
SFL 02010.03	20	10	3	40	20000	28000	○	○	■	■	■	○	○
SFL 02015.06	20	15	6	40	20000	28000	○	○	■	■	■	○	○
SFL 02510.03	25	10	3	40	16000	18000	○	○	■	■	■	○	○
SFL 02515.06	25	15	6	40	16000	18000	○	○	■	■	■	○	○
SFL 03005.03	30	5	3	40	16000	18000	○	■	■	■	■	■	■
SFL 03005.06	30	5	6	40	16000	18000	○	■	■	■	■	■	■
SFL 03010.03	30	10	3	40	16000	18000	○	■	■	■	■	■	■
SFL 03010.06	30	10	6	40	16000	18000	○	■	■	■	■	■	■
SFL 03015.06	30	15	6	40	16000	18000	○	■	■	■	■	○	○
SFL 03020.06	30	20	6	40	16000	18000	■	■	○	○	○	○	○
SFL 04010.03	40	10	3	40	12000	18000	○	■	■	■	■	○	○
SFL 04010.06	40	10	6	40	12000	18000	○	■	■	■	■	■	■
SFL 04015.06	40	15	6	40	12000	18000	■	■	■	■	■	■	■
SFL 04020.06	40	20	6	40	12000	18000	○	■	■	■	■	■	■
SFL 05010.06	50	10	6	40	9000	12000	○	■	■	■	■	■	○

Packing unit: 10 pcs. per type

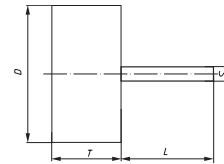
Ordering example: SFL 03010.06 Grit 80

For special dimensions and grit sizes minimum quantity on request.

The stated maximum operating speed only applies to a maximum overhang L_0 of 20 mm. Other overhang dimensions must be calculated separately.



152 Mounted flap wheels of abrasive cloth



SFL, Flap wheels

NEW

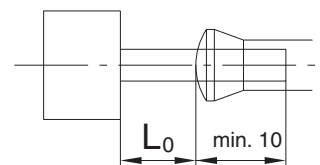
Description	D mm	T mm	S mm	L mm	n _{recommended} (1/min)	n _{max.} (1/min)	available grits NK						
							40	60	80	120	150	240	320
SFL 05015.06	50	15	6	40	9000	12000	■	■	■	■	■	■	■
SFL 05020.06	50	20	6	40	9000	12000	■	■	■	■	■	■	■
SFL 05030.06	50	30	6	40	9000	12000	○	■	■	■	■	○	■
SFL 06015.06	60	15	6	40	8000	12000	■	■	■	■	■	■	■
SFL 06020.06	60	20	6	40	8000	12000	■	■	■	■	■	■	■
SFL 06030.06	60	30	6	40	8000	12000	■	■	■	■	■	■	■
SFL 06040.06	60	40	6	40	8000	12000	■	■	■	■	■	■	■
SFL 06050.06	60	50	6	40	8000	8500	○	■	■	■	■	■	○
SFL 08015.06	80	15	6	40	6000	9000	○	■	■	■	■	■	■
SFL 08020.06	80	20	6	40	6000	9000	○	■	■	■	■	■	■
SFL 08030.06	80	30	6	40	6000	9000	■	■	■	■	■	○	■
SFL 08040.06	80	40	6	40	6000	9000	○	■	■	○	■	■	○
SFL 08050.06	80	50	6	40	6000	7500	■	■	■	■	■	■	■
SFL 10040.08	100	40	8	40	5000	7500	■	■	○	○	○	○	○
SFL 10050.08	100	50	8	40	5000	7500	○	■	■	○	■	○	○

Packing unit: 10 pcs. per type

Ordering example: SFL 06020.06 Grit 80

For special dimensions and grit sizes minimum quantity on request.

The stated maximum operating speed only applies to a maximum overhang L_0 of 20 mm. Other overhang dimensions must be calculated separately.



■ delivery ex-stock

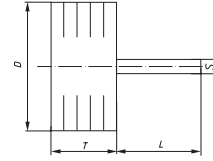
▲ quick delivery

○ available as special service



regrind service, please enquire





SFB, Slotted flap wheel

Description	D mm	T mm	S mm	L mm	n _{recommended} (1/min)	n _{max.} (1/min)	available grits NK						
							40	60	80	120	150	180	240
SFB 04020.06	40	20	6	40	12000	18000	○	○	■	○	○	○	○
SFB 05020.06	50	20	6	40	9000	12000	○	○	■	○	○	○	○
SFB 05030.06	50	30	6	40	9000	12000	○	○	○	■	○	○	○
SFB 06030.06	60	30	6	40	8000	12000	○	○	■	■	○	○	○

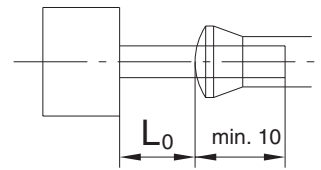
Packing unit: 10 pcs. per type

Ordering example: SFB 06030.06 Korn 120

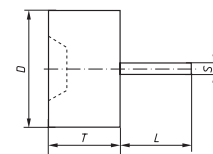
By slotting the lamellas on the periphery the flexibility of this type of mounted wheel is increased. The slotted flap wheel quickly profiles itself to the contour of the workpiece.

For special dimensions and grit sizes minimum quantity on request.

The stated maximum operating speed only applies to a maximum overhang L_0 of 20 mm. Other overhang dimensions must be calculated separately.



SFT, Flap wheels – recessed

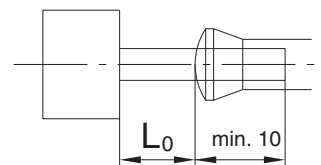


Description	D mm	T mm	S mm	L mm	n _{recommended} (1/min)	n _{max.} (1/min)	available grits NK						
							40	60	80	120	150	240	320
SFT 04030.06	40	30	6	40	12000	18000	○	■	■	○	■	○	○
SFT 06040.06	60	40	6	40	8000	8500	○	■	■	○	■	○	○

Packing unit: 10 pcs. per type

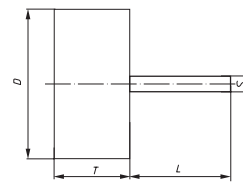
Ordering example: SFT 4030.06 Grit 80

The stated maximum operating speed only applies to a maximum overhang L_0 of 20 mm. Other overhang dimensions must be calculated separately.



154 Mounted flap wheels of abrasive cloth

**SFE,
Flap wheels
of abrasive cloth,
regular aluminium oxide,
special bond**



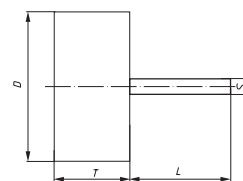
Description	D mm	T mm	S mm	L mm	n _{recommended} (1/min)	n _{max.} (1/min)	available grits NKE						
							40	60	80	120	150	180	
SFE 03010.03	30	10	3	40	16000	18000	○	○	○	■	○	○	
SFE 03010.06	30	10	6	40	16000	18000	○	■	■	○	■	○	
SFE 04015.06	40	15	6	40	12000	18000	○	■	■	■	○	○	
SFE 05015.06	50	15	6	40	9000	12000	○	○	■	○	■	○	
SFE 06020.06	60	20	6	40	8000	12000	○	○	■	○	○	○	
SFE 06030.06	60	30	6	40	8000	12000	○	■	■	■	■	○	
SFE 06050.06	60	50	6	40	8000	8500	○	■	○	■	○	○	
SFE 08030.06	80	30	6	40	6000	9000	○	○	■	○	○	○	
SFE 08050.06	80	50	6	40	6000	7500	○	○	■	○	○	○	

Packing unit: 10 pcs. per type

Ordering example: SFE 03010.06 Grit 80

For special dimensions and grit sizes minimum quantity on request.
The stated maximum operating speed only applies to a maximum overhang L_0 of 20 mm. Other overhang dimensions must be calculated separately.

**SFC, Flap wheels
of abrasive cloth,
silicon carbide**

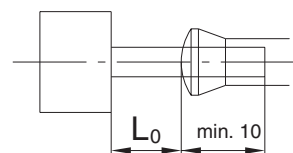


Description	D mm	T mm	S mm	L mm	n _{recommended} (1/min)	n _{max.} (1/min)	available grits SIC						
							40	60	80	120	150	180	
SFC 03010.06	30	10	6	40	16000	18000	○	○	■	○	■	○	
SFC 04015.06	40	15	6	40	12000	18000	○	○	■	○	○	○	
SFC 06020.06	60	20	6	40	8000	12000	○	○	■	■	○	○	
SFC 06030.06	60	30	6	40	8000	12000	○	○	○	■	○	○	

Packing unit: 10 pcs. per type

Ordering example: SFC 03010.06 Grit 150

For special dimensions and grit sizes minimum quantity on request.
The stated maximum operating speed only applies to a maximum overhang L_0 of 20 mm. Other overhang dimensions must be calculated separately.



■ delivery ex-stock

▲ quick delivery

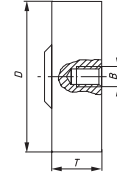
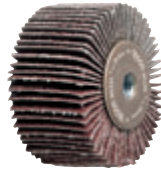
○ available as special service



regrind service, please enquire



SFI, Mounted flap wheels of abrasive cloth, with internal thread



Description	D mm	T mm	Thread B	n _{recom-} (1/min)	n _{max.} (1/min)	suitable tool adaptor	available grits NK		
							80	120	150
SFI 03005.M4	30	5	M4	16000	18000	WADI 0404	○	■	■
SFI 03010.M4	30	10	M4	16000	18000	WADI 0407	○	■	■
SFI 04015.M6	40	15	M6	10000	10000	WADI 0609	■	■	○
SFI 05020.M6	50	20	M6	7500	7500	WADI 0612	■	■	○

Packing unit: 10 pcs. per type

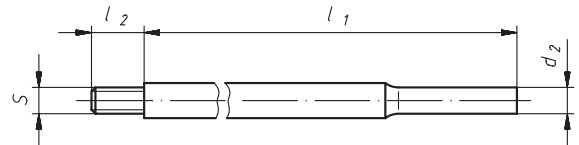
Ordering example: SFI 03010.M4 Grit 120

For special dimensions and grit sizes minimum quantity on request.

The stated maximum permissible operating speed is only valid if the correct tool adaptor is used (see table).



Adaptor for SFI



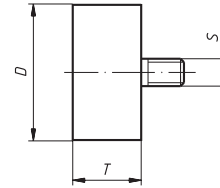
Description	d ₂ mm	l ₁ mm	S mm	l ₂ mm	
WADI 0404	6	80	M4	4	■
WADI 0407	6	80	M4	7	■
WADI 0609	6	100	M6	9	■
WADI 0612	6	100	M6	12	■

Packing unit: 1 pcs. per type

Ordering example: WADI 0404

156 Mounted flap wheels of abrasive cloth with thread

**SFA,
Flap wheels of abrasive
cloth, with external
thread**



Description	D mm	T mm	Thread S	n _{recommended} (1/min)	n _{max.} (1/min)	available grits NK		
						120	150	240
SFA 01505.M5	15	5	M5	16000	18000	○	■	■
SFA 02005.M5	20	5	M5	16000	18000	○	■	■
SFA 03005.M5	30	5	M5	16000	18000	■	■	■

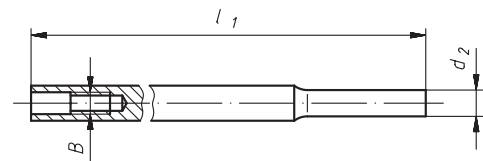
Packing unit: 10 pcs. per type

Ordering example: SFA 02005.M5 Grit 150

Minimum quantity on request

The stated maximum permissible operating speed is only valid if the correct tool adaptor is used (see table).

Adaptor for SFA

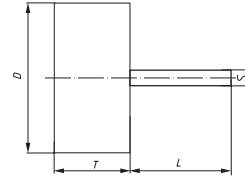


Description	d ₂ mm	l ₁ mm	B mm	
WADA 05	6	100	M5	■

Packing unit: 1 pcs. per type

Ordering example: WADA 05

SFV, Flap wheels of fleece flaps

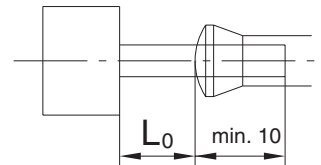


Description	D mm	T mm	S mm	L mm	n _{recommended} (1/min)	n _{max} (1/min)	Qualities Reg. al.-oxide NK			Silicon carbide SIC		
							medium A104	fine A106	very fine A107	medium S204	fine S206	very fine S207
SFV 04020.06	40	20	6	40	7500	14000	■	■	■	○	■	■
SFV 04030.06	40	30	6	40	7500	14000	■	■	■	○	○	■
SFV 05020.06	50	20	6	40	6000	11000	■	■	○	■	■	■
SFV 05030.06	50	30	6	40	6000	11000	■	■	■	○	○	■
SFV 05040.06	50	40	6	40	6000	11000	■	■	■	○	○	■
SFV 06030.06	60	30	6	40	5000	9000	■	■	■	■	■	■
SFV 06040.06	60	40	6	40	5000	9000	■	■	■	■	○	■
SFV 06050.06	60	50	6	40	5000	9000	■	■	■	○	○	■
SFV 08040.06	80	40	6	40	4000	7000	■	■	○	■	■	■
SFV 08050.06	80	50	6	40	4000	7000	■	■	■	■	■	■

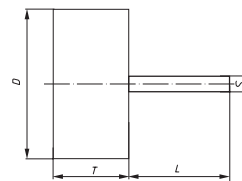
Packing unit: 10 pcs. per type

Ordering example: SFV 06030.06 A104

For special dimensions and grit sizes minimum quantity on request.
The stated maximum operating speed only applies to a maximum overhang L_0 of 20 mm. Other overhang dimensions must be calculated separately.



158 Mounted flap wheels of abrasive fleece



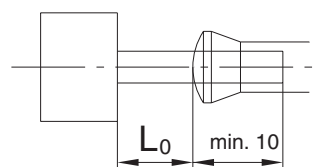
SFR, Mounted fleece discs

Description	D mm	T mm	S mm	L mm	n _{recommended} (1/min)	n _{max} (1/min)	Qualities			Silicon carbide SIC		
							Reg. al.-oxide NK medium A104	fine A106	very fine A107	medium S204	fine S206	very fine S207
SFR 06050.06	60	50	6	40	5000	9000	■	■	■	○	○	○
SFR 08050.06	80	50	6	40	4000	7000	■	■	■	○	○	○

Packing unit: 10 pcs. per type

Ordering example: SFR 08050.06 A106

The stated maximum operating speed only applies to a maximum overhang L_0 of 20 mm. Other overhang dimensions must be calculated separately.



**We are a member of the Organization
for the safety of Abrasives**



Further information: www.osa-abrasives.org

**SFM,
Flap wheels of abrasive
fleece with abrasive
cloth**



Description	D mm	T mm	S mm	L mm	n _{recommended} (1/min)	n _{max} (1/min)	Qualities					
							Reg. al.-oxide NK			Silicon carbide SIC		
							medium A104/80	fine A106/150	very fine A107/240	medium S204/80	fine S206/150	very fine S207/240
SFM 04020.06	40	20	6	40	7500	14000	■	■	■	■	■	○
SFM 04030.06	40	30	6	40	7500	14000	■	■	■	■	■	■
SFM 05020.06	50	20	6	40	6000	11000	■	■	○	○	■	○
SFM 05030.06	50	30	6	40	6000	11000	○	■	■	○	○	○
SFM 05040.06	50	40	6	40	6000	11000	■	■	○	○	○	○
SFM 06030.06	60	30	6	40	5000	9000	■	■	■	■	■	■
SFM 06040.06	60	40	6	40	5000	9000	■	■	■	■	○	○
SFM 06050.06	60	50	6	40	5000	9000	■	■	○	○	○	○
SFM 08040.06	80	40	6	40	4000	7000	■	■	■	○	■	○
SFM 08050.06	80	50	6	40	4000	7000	■	■	■	■	■	○

Packing unit: 10 pcs. per type

Ordering example: SFM 05030.06 A107/240

For special dimensions and grit sizes minimum quantity on request.
The stated maximum operating speed only applies to a maximum overhang L_0 of 20 mm. Other overhang dimensions must be calculated separately.

