

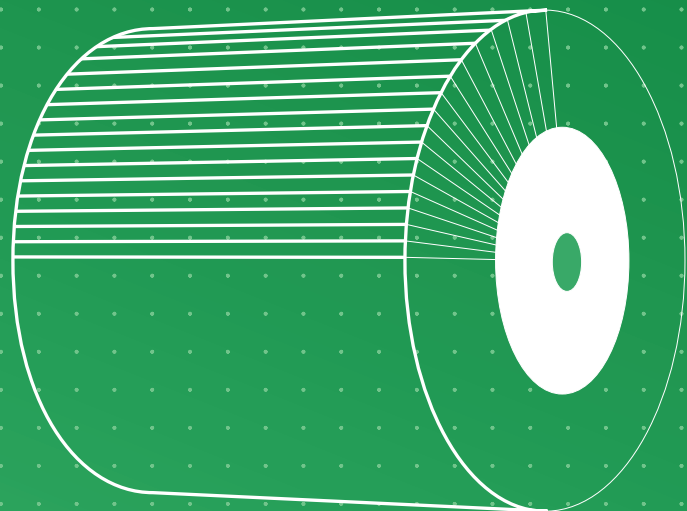
Flap rolls

222	Qualities and Applications
288	General Information
289	Flap rolls of abrasive cloth, LWL
290	Flap rolls of abrasive fleece, LWW
291	Flap rolls of abrasive fleece/abrasive cloth combination, LWM
292	Sinus-Abrasive rolls of abrasive fleece, LWF
292	Conditioning machine



Product line marking

Product lines are labelled in the table header with the appropriate tabs. Further information on page **14** and **15**.



Information

General

These rolls have a nineteen mm bore with four keyways; they are used on hand-held surface conditioning machines.

LWL, Flap rolls of abrasive cloth for conditioning machines

These tools consist of individual flaps which are radially embedded into a resin core.

Please take note of the rotational direction!

Examples of application:

- preparation work
- deburring
- de-rusting
- pre-finishing
- graining
- keying

LWV, Flap rolls of abrasive fleece for conditioning machines

This product type consists of abrasive fleece flaps; the special fleece gives the tool flexibility and conforms to the individual workpiece profile.

Examples of application:

- matting
- conditioning
- polishing
- finishing
- final finishing of the surface

LWF, Sinus-Abrasive rolls of abrasive fleece for conditioning machines

These tools are manufactured from strips of abrasive fleece which are wound in a wave pattern around the core; this configuration achieves an unblemished grained matt surface finish.

The special fleece makes the LWF flexible and conforms to the individual workpiece profile.

Examples of application:

- matting
- conditioning
- polishing
- finishing
- fine surface finishing

LWM, Flap rolls of abrasive fleece with abrasive cloth insert for conditioning machines

Due to the combination of coated abrasive and abrasive fleece, greater stock removal is achieved compared to the product type LWV.

Please take note of the rotational direction!

Examples of application:

- preparation work
- de-rusting
- pre-finishing
- graining
- keying

LWM, flap rolls using TF material

These rolls are supplied with a 19 mm bore and four key-ways, and are particularly suited for stainless steel.

The reverse side of the reinforced abrasive fleece guarantees uniform wear of the fleece and the coated abrasive flaps.

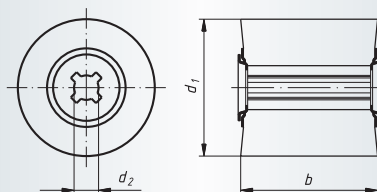
Please take note of the rotational direction!



Industry

LWL, Flap rolls of abrasive cloth for conditioning machines

Ordering example: A2280100500040



Packing unit:

LWL 100050 = 2 pcs. per type

LWL 100100 = 1 pc. per type

NK = reg. Aluminium Oxide

Machines to suit: page 292

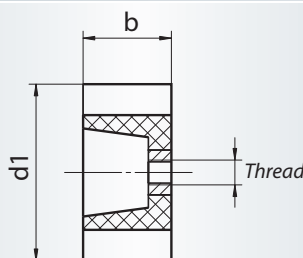
Description	Grits	d ₁ mm	b mm	d ₂ mm	n recom. (1/min)	n max. (1/min)	Product-Number	recommended for	
LWL 100050	NK 40	100	50	19	3.700	6.000	A2280100500040	① ② ③ ④ ⑤ ⑥ ⑦ ⑧	■
LWL 100050	NK 60	100	50	19	3.700	6.000	A2280100500060	① ② ③ ④ ⑤ ⑥ ⑦ ⑧	■
LWL 100050	NK 80	100	50	19	3.700	6.000	A2280100500080	① ② ③ ④ ⑤ ⑥ ⑦ ⑧	■
LWL 100050	NK 60	100	50	19	3.700	6.000	A2280100501060	① ② ③ ④ ⑤ ⑥ ⑦ ⑧	■
LWL 100050	NK 80	100	50	19	3.700	6.000	A2280100501080	① ② ③ ④ ⑤ ⑥ ⑦ ⑧	■
LWL 100100	NK 40	100	100	19	3.700	6.000	A22801001000040	① ② ③ ④ ⑤ ⑥ ⑦ ⑧	■
LWL 100100	NK 60	100	100	19	3.700	6.000	A22801001000060	① ② ③ ④ ⑤ ⑥ ⑦ ⑧	■
LWL 100100	NK 80	100	100	19	3.700	6.000	A22801001000080	① ② ③ ④ ⑤ ⑥ ⑦ ⑧	■



Industry

LWL, Flap rolls of abrasive cloth with thread

Ordering example: A2280100501060



Packing unit:

2 pcs. per type

NK = reg. Aluminium Oxide

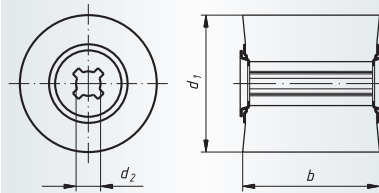
Suitable for controlled angle grinders.

Description	Grits	d ₁ mm	b mm	Thread	n recom. (1/min)	n max. (1/min)	Product-Number	recommended for		
LWL 100050	NK 60	100	50	M 14	3.700	6.000	A2280100501060	① ② ③ ④ ⑤ ⑥ ⑦ ⑧	■	NEW
LWL 100050	NK 80	100	50	M 14	3.700	6.000	A2280100501080	① ② ③ ④ ⑤ ⑥ ⑦ ⑧	■	NEW



LWV, Flap rolls of abrasive fleece for conditioning machines

Ordering example: A2286100500104



Packing unit:

LWV 100050 = 2 pcs. per type

LWV 100100 = 1 pc. per type

A = reg. Aluminium Oxide

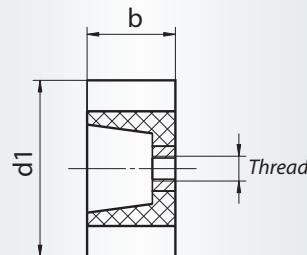
Machines to suit: page 292

Description	Grits	d ₁ mm	b mm	d ₂ mm	n recom. (1/min)	n max. (1/min)	Product-Number	recommended for	
LWV 100050	A 104	100	50	19	2.800	6.000	A2286100500104	1 2 3 4 5 6 7 8	■
LWV 100050	A 106	100	50	19	2.800	6.000	A2286100500106	1 2 3 4 5 6 7 8	■
LWV 100050	A 107	100	50	19	2.800	6.000	A2286100500107	1 2 3 4 5 6 7 8	■
LWV 100100	A 104	100	100	19	2.800	6.000	A22861001000104	1 2 3 4 5 6 7 8	■
LWV 100100	A 106	100	100	19	2.800	6.000	A22861001000106	1 2 3 4 5 6 7 8	■
LWV 100100	A 107	100	100	19	2.800	6.000	A22861001000107	1 2 3 4 5 6 7 8	■



LWV, Flap rolls of abrasive fleece with thread

Ordering example: A2286100501104



Packing unit:

2 pcs. per type

A = reg. Aluminium Oxide

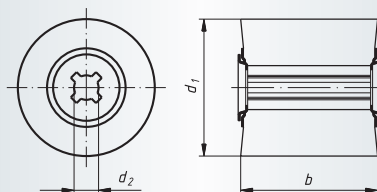
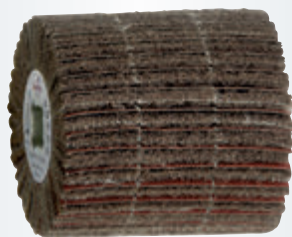
Suitable for controlled angle grinders.

Description	Grits	d ₁ mm	b mm	Thread	n recom. (1/min)	n max. (1/min)	Product-Number	recommended for	
NEW LWV 100050	A 104	100	50	M 14	2.800	6.000	A2286100501104	1 2 3 4 5 6 7 8	■
NEW LWV 100050	A 106	100	50	M 14	2.800	6.000	A2286100501106	1 2 3 4 5 6 7 8	■
NEW LWV 100050	A 107	100	50	M 14	2.800	6.000	A2286100501107	1 2 3 4 5 6 7 8	■



LWM, Flap rolls of abrasive fleece/abrasive cloth combination

Ordering example: A22881001000120



Packing unit:
1 pc. per type
TF = Special quality for INOX
Machines to suit: page 292

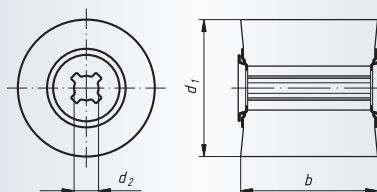
Description	Grits	d ₁ mm	b mm	d ₂ mm	n recom. (1/min)	n max. (1/min)	Product-Number	recommended for
LWM 100100	TF 120/80	100	100	19	2.800	6.000	A22881001000120	1 2 3 4 5 6 7 8

Ideal for surface finishing of metalsheet components such as stainless steel sinks and containers



LWM, Flap rolls of abrasive fleece/abrasive cloth combination

Ordering example: A2288100500104



Packing unit:
LWM 100050 = 2 pcs. per type
LWM 100100 = 1 pc. per type
A = reg. Aluminium Oxide
Machines to suit: page 292

Description	Grits	d ₁ mm	b mm	d ₂ mm	n recom. (1/min)	n max. (1/min)	Product-Number	recommended for
LWM 100050	A 104/80	100	50	19	2.800	6.000	A2288100500104	1 2 3 4 5 6 7 8
LWM 100050	A 106/150	100	50	19	2.800	6.000	A2288100500106	1 2 3 4 5 6 7 8
LWM 100050	A 107/240	100	50	19	2.800	6.000	A2288100500107	1 2 3 4 5 6 7 8
LWM 100100	A 104/80	100	100	19	2.800	6.000	A22881001000104	1 2 3 4 5 6 7 8
LWM 100100	A 106/150	100	100	19	2.800	6.000	A22881001000106	1 2 3 4 5 6 7 8
LWM 100100	A 107/240	100	100	19	2.800	6.000	A22881001000107	1 2 3 4 5 6 7 8

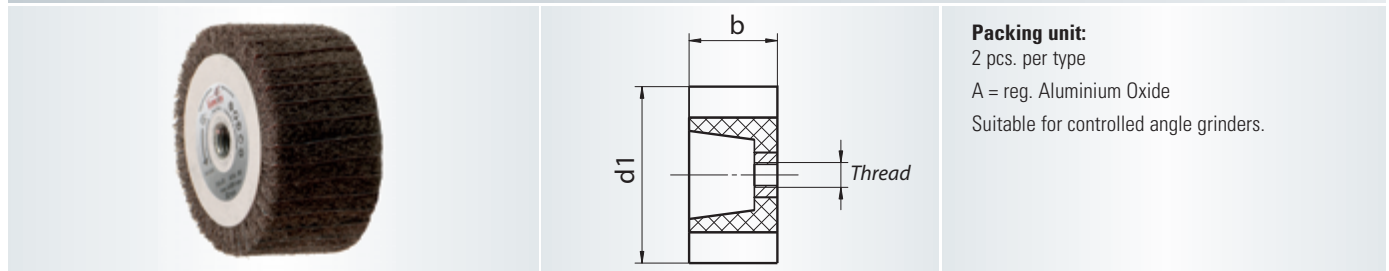
292 Flap rolls



Industry

LWM, Flap rolls of abrasive fleece/abrasive cloth combination with thread

Ordering example: A2288100501104



Packing unit:
2 pcs. per type
A = reg. Aluminium Oxide
Suitable for controlled angle grinders.

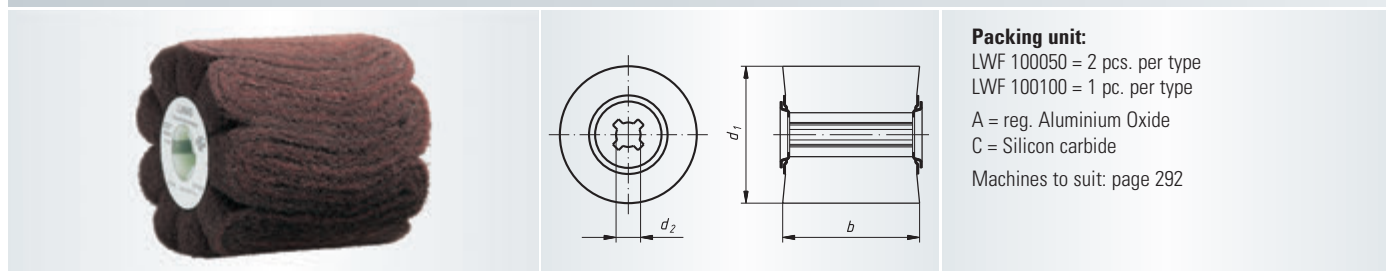
Description	Grits	d ₁ mm	b mm	Thread	n recom. (1/min)	n max. (1/min)	Product-Number	recommended for	
NEW LWM 100050	A 104/80	100	50	M 14	2.800	6.000	A2288100501104	① ② ③ ④ ⑤ ⑥ ⑦ ⑧	■
NEW LWM 100050	A 106/150	100	50	M 14	2.800	6.000	A2288100501106	① ② ③ ④ ⑤ ⑥ ⑦ ⑧	■



Industry

LWF, Sinus-Abrasive rolls of abrasive fleece for conditioning machines

Ordering example: A2281100500104



Packing unit:
LWF 100050 = 2 pcs. per type
LWF 100100 = 1 pc. per type
A = reg. Aluminium Oxide
C = Silicon carbide
Machines to suit: page 292

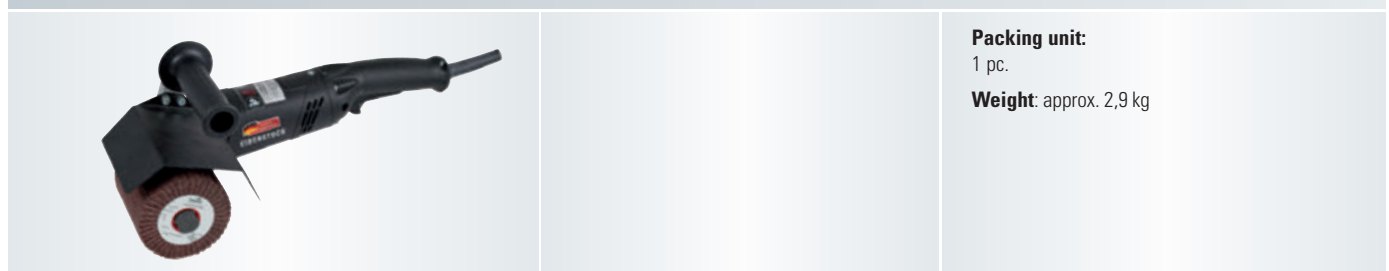
Description	Grits	d ₁ mm	b mm	d ₂ mm	n recom. (1/min)	n max. (1/min)	Product-Number	recommended for	
LWF 100050	A 104	100	50	19	2.800	3.800	A2281100500104	① ② ③ ④ ⑤ ⑥ ⑦ ⑧	■
LWF 100050	A 106	100	50	19	2.800	3.800	A2281100500106	① ② ③ ④ ⑤ ⑥ ⑦ ⑧	■
LWF 100050	C 208	100	50	19	2.800	3.800	A2281100500208	① ② ③ ④ ⑤ ⑥ ⑦ ⑧ ⑨	■
LWF 100100	A 104	100	100	19	2.800	3.800	A22811001000104	① ② ③ ④ ⑤ ⑥ ⑦ ⑧	■
LWF 100100	A 106	100	100	19	2.800	3.800	A22811001000106	① ② ③ ④ ⑤ ⑥ ⑦ ⑧	■
LWF 100100	C 208	100	100	19	2.800	3.800	A22811001000208	① ② ③ ④ ⑤ ⑥ ⑦ ⑧ ⑨	■



Industry

Conditioning machine ESM 1310

Ordering example: A3995ESM1310



Packing unit:
1 pc.
Weight: approx. 2,9 kg

Description	Idle speed min-1	Power input W	Max. tool diameter Ø mm	Tool width mm	Hole size mm	Product-Number	
ESM 1310	1.300 - 3.050	1.300	120	100	19	A3995ESM1310	■

Abrasive Bands and Mandrels

222 Qualities and Applications

294 General Information

295 Abrasive Bands, cylindrical

301 Mandrels for cylindrical shape

302 Abrasive Bands, cylindrical, unlined

302 Mandrels for cylindrical shape, soft

303 Abrasive Bands, conical

303 Mandrels for conical shape

304 Grinding rolls

304 Mounting device for grinding rolls

305 Linishing belts

373 Power tools

Product line marking

Product lines are labelled in the table header with the appropriate tabs. Further information on page **14** and **15**.

