


SC Pentagon SRL

Tel/fax:0236/412.088

Depozite:Galati,Constanta,Tulcea si Braila

www.PentagonRomania.ro; office@pentagonromania.ro



	Page		Page
General Information	114	Hand brush	118
Cylindrical brush, shaft mounted	115	Cylindrical wheel brush	118
Cylindrical brush with nylon filaments	116	Twist knotted wheel brush	119
Tapered wheel brush	116	Cup wheel brush, thread mounted	119
End brush, shaft mounted	117		225



General Information

Filament Quality and Style

Quality steel wire

Using quality steel wire with a high tensile strength; this gives long and economical tool life.

Stainless steel wire

This wire is used where residues from normal steel wire would affect surfaces such as stainless steel, aluminium and other non-ferrous metals.

Nylon filaments, abrasive impregnated

Abrasive impregnated nylon filaments are very flexible and follow the contour of the workpiece without being too aggressive; in use, new abrasive is exposed to the workpiece at all times thus resulting in a constant performance and long life.

Style

Brushes are manufactured in both steel wire qualities with crimped 'or twist knotted style. Brushes with twist knotted steel wire meet the most extreme demands and normally achieve longer tool life compared to crimped wire brushes.

Brushes are also manufactured from crimped wire embedded in a resin bond. This style features higher performance and is ideally suited to achieve uniform surfaces and precise edges.

Application

Our wire brushes accommodate most of the ever increasing number of applications, like deburring, descaling, derusting, surface cleaning, fettling, roughening and paint stripping.

Brushes manufactured with abrasive impregnated nylon filaments are ideally suited to remove stain from metal surfaces, for graining of soft wood, car body repair jobs, stripping of paint residues.

Working mode and machines

Technical brushes are flexible tools which follow the contour of the workpiece.

In order to achieve best results, only the tip of the filament should be in contact with the workpiece. The elasticity of the brush depends on the exposed length of the filaments; for wire brushes, the wire diameter is an important factor. Brushes with very long filaments are extremely flexible and must be used with low pressure only. High pressure reduces the life of the brush and creates higher wear. Technical brushes can be used on stationary and off-hand machines.

Operating speeds

Wire brushes act harder with increasing speed and softer with lower speed:

Machining of steel:	approx. 30 m/s
Machining of non-ferrous metals:	approx. 18-20 m/s
Machining of plastic:	approx. 15 m/s

Twist knotted wire brushes may be operated at higher speeds, for instance machining of steel: approx. 40 m/s

Brushes made from nylon filaments achieve best results at operating speeds between 18 and 20 m/s, depending on the material to be machined.

Safety instructions

Technical brushes are manufactured under strict quality control (according to EN 1083-2). It is recommended to wear safety clothing when working with technical brushes, e.g.:



Wear safety goggles or glasses



Use ear muffs

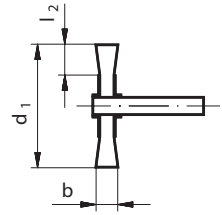


Read operating instructions



Wear safety gloves

BS, Cylindrical brush, Shank 6 mm



	Description	d ₁ mm	b mm	l ₂ mm	Wire Ø	Quality		Type		n _{max} (1/min)	
						Steel	Stainless	crimped	knotted		
NEW	BSSW 04010	40	10	9	0,2	X		X		18000	■
	BSVW 04011	40	11	9	0,2		X	X		18000	■
	BSSW 05010	50	10	12	0,2	X		X		15000	■
NEW	BSSW 05014	50	14	12	0,2	X		X		15000	■
NEW	BSVW 05014	50	14	12	0,2		X	X		15000	■
	BSSW 06018	60	16	12	0,2	X		X		15000	■
NEW	BSSW 06018	60	16	17	0,3	X		X		15000	■
	BSVW 06018	60	16	17	0,2		X	X		15000	■
	BSSW 07018	70	16	19	0,2	X		X		15000	■
NEW	BSSW 07018	70	16	19	0,3	X		X		15000	■
NEW	BSVW 07018	70	16	19	0,3		X	X		15000	■
	BSVW 07018	70	16	19	0,2		X	X		15000	■
	BSSZ 07508	75	12	15	0,5	X			X	25000	■
	BSVZ 07508	75	12	15	0,5		X		X	25000	■

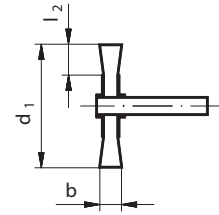
Packing unit: 10 pcs. per type

Ordering example: BSSW 04010

116 Technical Brushes



BSN, Cylindrical brush of abrasive nylon, Shank 6 mm

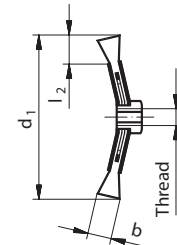


	Description	d ₁ mm	b mm	l ₂ mm			Type		n _{max} (1/min)	
							coarse	fine		
NEW	BSNG 05010	50	10	12			X		15000	■
NEW	BSNF 05010	50	10	12				X	15000	■
NEW	BSNG 07012	70	12	20			X		15000	■
NEW	BSNF 07012	70	12	20				X	15000	■
	BSNG 10007	100	8	22			X		4500	■
	BSNF 10007	100	8	22				X	4500	■

Packing unit: 10 pcs. per type

Ordering example: BSNG 05010

BK, Conical brushes

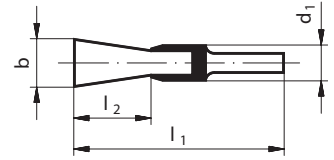


	Bezeichnung	d ₁ mm	b mm	l ₂ mm	Thread	Wire Ø	Quality		Type		n _{max} (1/min)	
							Steel	Stainless	crimped	knotted		
NEW	BKVW 10012	100	10	20	M14	0,3		X	X		12500	■
NEW	BKSW 10012	100	10	20	M14	0,35	X		X		12500	■
NEW	BKVZ 10013	100	13	20	M14	0,5		X		X	12500	■
	BKSZ 10013	100	13	20	M14	0,5	X			X	12500	■

Packing unit: 1 pc. per type

Ordering example: BKVW 10012

BP, End brush, Shank 6 mm

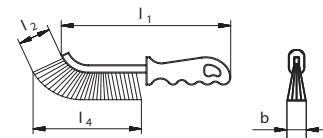


Description	b mm	l ₂ mm	d ₁ mm	l ₁ mm	Wire Ø	Quality		Type		n _{max} (1/min)	
						Steel	Stainless	crimped	knotted		
BPSW 01020	10	20	10	60	0,3	X		X		20000	■
BPVW 01020	10	20	10	60	0,3		X	X		20000	■
BPSW 01725	17	22	16	65	0,3	X		X		20000	■
BPVW 01725	17	22	16	65	0,3		X	X		20000	■
BPSZ 02029	20	28	19	72	0,35	X			X	20000	■
BPVZ 02029	20	28	19	72	0,25		X		X	20000	■
BPSW 02525	25	25	22	68	0,3	X		X		18000	■
BPVW 02525	25	25	22	68	0,3		X	X		18000	■
BPSZ 02329	23	28	22	72	0,35	X			X	20000	■
BPSW 03025	30	25	29	68	0,3	X		X		18000	■
BPVW 03025	30	25	29	68	0,3		X	X		18000	■

Packing unit: 10 pcs. per type

Ordering example: BPSW 01020

BHU, Hand brush for universal application

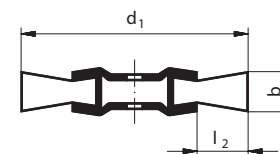


Description	b mm	l ₂ mm	l ₁ mm	l ₄ mm	Wire Ø	Quality					
						Steel	Stainless				
BHUS 26525	15	28	265	130	0,3	X					■
BHUV 26525	15	28	265	130	0,3		X				■

Packing unit: 1 pc. per type

Ordering example: BHUS 26525

BR, Wheel brush, crimped wire



Description	d ₁ mm	b mm	R mm	l ₂ mm	Wire Ø	Quality		Type		n _{max} (1/min)	
						Steel	Stainless	crimped	knotted		
NEW BRSW 15022	150	22	40	33	0,35	X		X		6000	■
NEW BRSW 20024	200	24	50	48	0,35	X		X		6000	■

Packing unit: 1 pc. per type

Ordering example: BRSW 15022



All brushes are supplied with adapters sets for easy mounting on all popular grinding machines. The adapters have the following dimensions:

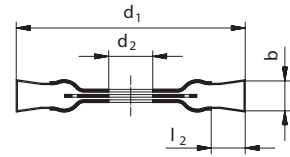
tube "R" 40 mm: 40 / 32 / 1" / 22,2 / 20 / 16 1/2"

tube "R" 50 mm: 50 / 32 / 1" / 22,2 / 20 / 16 1/2"

Please take note of the technical advices for the correct and safe assembly.

The corresponding information leaflet is included in our packing.

BR, Twist knotted wheel brush

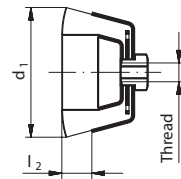


Description	d ₁ mm	b mm	d ₂ mm	l ₂ mm	Wire Ø	Quality		Type		n _{max} (1/min)	
						Steel	Stainless	crimped	knotted		
BRSZ 11512	115	14	22,23	20	0,5	X			X	12500	■
BRVZ 11512	115	14	22,23	20	0,35		X		X	12500	■
NEW BRSZ 12514	125	14	22,23	20	0,5	X			X	12500	■
NEW BRVZ 12514	125	14	22,23	20	0,5		X		X	12500	■
NEW BRSZ 17814	178	14	22,23	32	0,5	X			X	9000	■

Packing unit: 1 pc. per type

Ordering example: BRSZ 11512

BTG, Cup brush with thread



Description	d ₁ mm	l ₂ mm	Thread	Wire Ø	Quality		Type		n _{max} (1/min)	
					Steel	Stainless	crimped	knotted		
BTWW 06021 G	60	20	M14	0,3		X	X		12000	■
NEW BTBW 06020 G	60	20	M14	0,35	X		X		12000	■
BTSZ 06520 G	65	20	M14	0,5	X			X	12500	■
BTVZ 06520 G	65	20	M14	0,35		X		X	12500	■
BTSZ 08020 G	80	20	M14	0,5	X			X	8500	■
NEW BTBW 08025 G	80	25	M14	0,35	X		X		8500	■
NEW BTBW 10030 G	100	30	M14	0,35	X		X		8500	■

Packing unit: 1 pc. per type

Ordering example: BTWW 06021 G